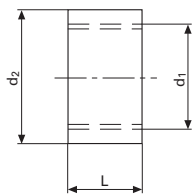
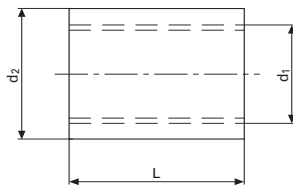


Typ 501 Halbe Muffe / Demi-Manchon AISI 316



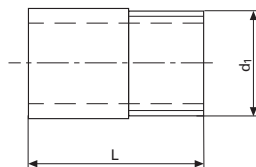
d ₁	d ₂	L
1/8"	14	10
1/4"	19	11
3/8"	22	13
1/2"	26	16
3/4"	32	18
1"	40	20
1 1/4"	48	22
1 1/2"	55	23
2"	66	27

Typ 502 Muffe / Manchon AISI 316



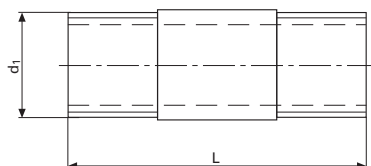
d ₁	d ₂	L
1/8"	14	17
1/4"	19	25
3/8"	22	26
1/2"	27	34
3/4"	32	36
1"	40	43
1 1/4"	48	48
1 1/2"	55	48
2"	66	56
2 1/2"	83	65
3"	96	71

Typ 503 Anschweissnippel / Mamelon à souder AISI 316L



d ₁	L
1/4"	22
3/8"	23
1/2"	27
3/4"	33
1"	35
1 1/4"	36
1 1/2"	41
2"	46
2 1/2"	55
3"	70

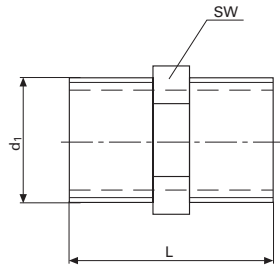
Typ 504 Rohrdoppelnippel / Mamelon double AISI 316L



d ₁	L*
1/4"	40
3/8"	40
1/2"	60
3/4"	60
1"	60
1 1/4"	80
1 1/2"	80
2"	100
2 1/2"	100
3"	120

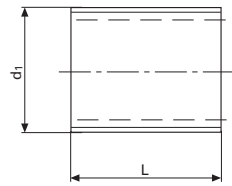
* andere Längen auf Anfrage / d'autres longueurs sur demande

Typ 505 Doppelnippel mit Sechskant / *Mamelon hexagonal* AISI 316



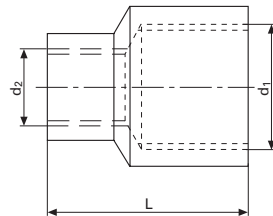
d ₁	SW	L
1/8"	13	26
1/4"	15	30
3/8"	18	30
1/2"	23	40
3/4"	29	40,5
1"	35	48
1 1/4"	45	49,5
1 1/2"	50	49,5
2"	62	52,5

Typ 506 Gewindenippel / *Mamelon* AISI 316



d ₁	L
1/8"	16
1/4"	18
3/8"	22
1/2"	25
3/4"	30
1"	35
1 1/4"	38
1 1/2"	38
2"	45

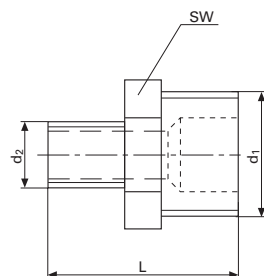
Typ 507 Reduziermuffe / *Manchon de réduction* AISI 316



d ₁	d ₂	L
1/4"	1/8"	24
3/8"	1/8"	29
3/8"	1/4"	29
1/2"	1/4"	34
1/2"	3/8"	34,5
3/4"	3/8"	36,5
3/4"	1/2"	36,5
1"	1/2"	42
1"	3/4"	41,5
1 1/4"	3/4"	46
1 1/4"	1"	47

d ₁	d ₂	L
1 1/2"	1"	50
1 1/2"	1 1/4"	51,5
2"	1 1/4"	59
2"	1 1/2"	59

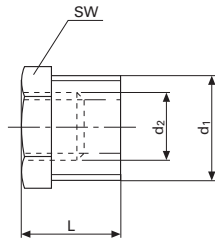
Typ 508 Reduziernippel / *Mamelon réduction* AISI 316



d ₁	d ₂	SW	L
1/4"	1/8"	15	29
3/8"	1/8"	18	31
3/8"	1/4"	18	32
1/2"	1/4"	23	35
1/2"	3/8"	23	36
3/4"	3/8"	29	36
3/4"	1/2"	29	39
1"	1/2"	35	45
1"	3/4"	35	45
1 1/4"	3/4"	45	46
1 1/4"	1"	45	50

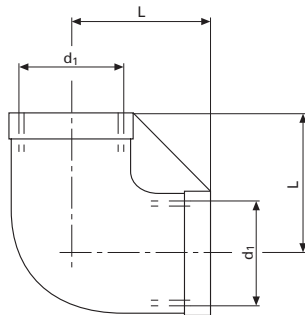
d ₁	d ₂	SW	L
1 1/2"	1"	50	51
1 1/2"	1 1/4"	50	51
2"	1 1/4"	62	52
2"	1 1/2"	62	52

Typ 509 Reduzierbuchse / Réduction AISI 316



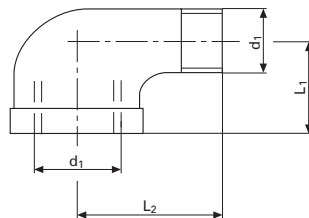
d ₁	d ₂	SW	L	d ₁	d ₂	SW	L
1/4"	1/8"	17	17	1 1/2"	1"	50	30
3/8"	1/8"	20	17,5	1 1/2"	1 1/4"	50	30
3/8"	1/4"	20	17,5	2"	1 1/4"	62	33,5
1/2"	1/4"	25	22	2"	1 1/2"	62	33,5
1/2"	3/8"	25	22				
3/4"	3/8"	30	23				
3/4"	1/2"	30	23				
1"	1/2"	36,5	27				
1"	3/4"	36,5	27				
1 1/4"	3/4"	45,5	30				
1 1/4"	1"	45,5	30				

Typ 511 Winkel 90° / Equerre 90° AISI 316



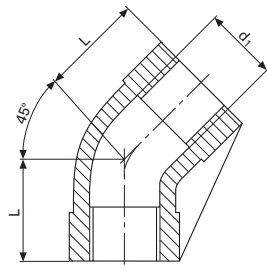
d ₁	L
1/8"	17
1/4"	19
3/8"	21,5
1/2"	27
3/4"	30
1"	35
1 1/4"	43
1 1/2"	45
2"	54
2 1/2"	69
3"	77

Typ 512 Winkel 90° I - A / Equerre 90° f - m AISI 316



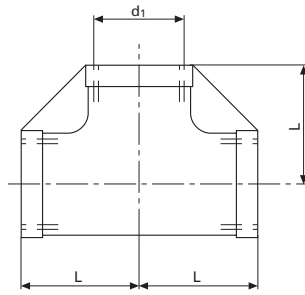
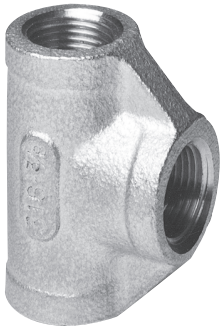
d ₁	L ₁	L ₂
1/8"	19	26,5
1/4"	21,5	30,8
3/8"	24,5	36,5
1/2"	29	41
3/4"	33,5	48
1"	37	55
1 1/4"	43	62
1 1/2"	47	67
2"	57,5	77,5
2 1/2"	66	93
3"	74	107

Typ 520 Winkel 45° / Coude 45° AISI 316



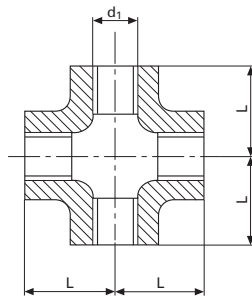
d ₁	L
1/8"	17
1/4"	17
3/8"	19
1/2"	21
3/4"	25
1"	29
1 1/4"	33
1 1/2"	37
2"	42

Typ 513 T-Stück egal / Té égale AISI 316



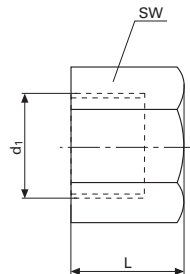
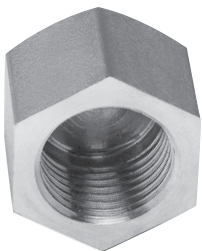
d ₁	L
1/8"	17
1/4"	19,5
3/8"	22
1/2"	27,5
3/4"	30
1"	35
1 1/4"	42,5
1 1/2"	45
2"	54,5
2 1/2"	68
3"	76

Typ 521 Kreuz egal / Croix égale AISI 316



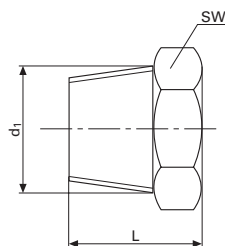
d ₁	L
1/8"	17
1/4"	19
3/8"	23
1/2"	27
3/4"	32
1"	37
1 1/4"	43
1 1/2"	48
2"	56
2 1/2"	68
3"	78

Typ 515 Sechskantkappe / Bouchon femelle hexagonal AISI 316



d ₁	L	SW
1/4"	17	17,5
3/8"	17,5	21,2
1/2"	20	25,5
3/4"	20,4	30,1
1"	27,1	37,4
1 1/4"	30	47
1 1/2"	30,3	53,2
2"	32,3	66

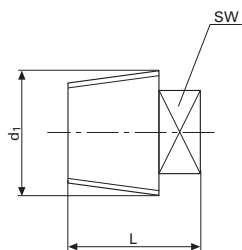
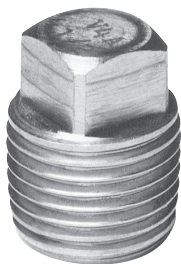
Typ 517 Stopfen konisch / Bouchon mâle conique AISI 316



d ₁	L	SW
*1/8"	19	12
*1/4"	19	16
*3/8"	19	19
1/2"	28	23
3/4"	26	28
1"	28	36
1 1/4"	33	46
1 1/2"	35	50
2"	39	65

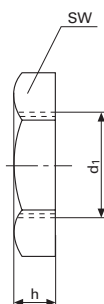
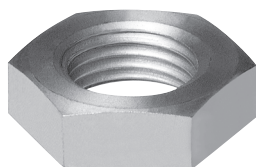
*aus Vollmaterial / modèle plein

Typ 518 Stopfen kon. / Bouchon mâle con. AISI 316



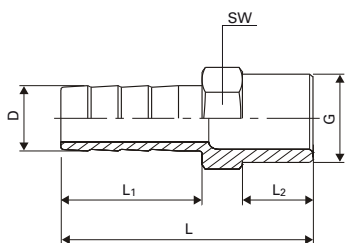
d ₁	L	SW
1/8"	14	7
1/4"	17	8
3/8"	18	10
1/2"	22	11
3/4"	24	17
1"	27	19
1 1/4"	29	22
1 1/2"	30	22
2"	36	27

Typ 514 Sechskantmutter / Ecrou hexagonal AISI 316



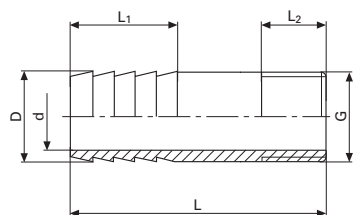
d ₁	h	SW
1/8"	6,3	17,3
1/4"	7	19,1
3/8"	7,5	25,3
1/2"	7,7	30,1
3/4"	9,2	34,4
1"	9	43,2
1 1/4"	11,7	52
1 1/2"	11,8	58,1
2"	13,1	71,9

Typ 522 Schlauchnippel mit 6kt. / Raccord de tuyau souple avec hexagonal AISI 316



G	L	L ₁	L ₂	D	SW
1/4"	43	25	11,5	8	15
3/8"	49	29,5	13	10	19
1/2"	56,5	33	15	13	23
3/4"	60	34	15,5	20	28
1"	69	39	19	25	37
1 1/4"	70	37	22	32	45
1 1/2"	80	47,5	22	40	50
2"	88	53,5	22,5	51,5	62

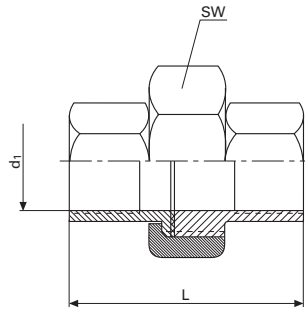
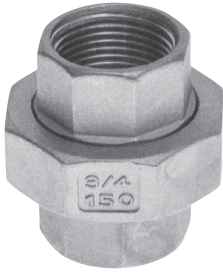
Typ 523 Schlauchnippel / Raccord de tuyau souple AISI 316



G	d	D	L	L ₁	L ₂
1/4"	10	13	70	30	11
3/8"	13	17	70	30	11
1/2"	17	21	70	30	15
3/4"	22	26	70	30	16
1"	28	33	70	30	18
1 1/4"	37	42	70	30	21
1 1/2"	42	48	100	30	22
2"	54	60	100	30	25

Typ 701 Verschraubung / Raccord AISI 316

flach dichtend, Innengewinde / joint plat, taraudé

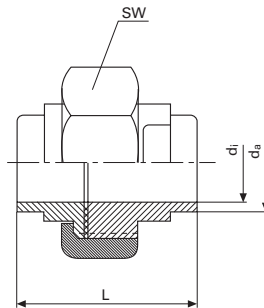
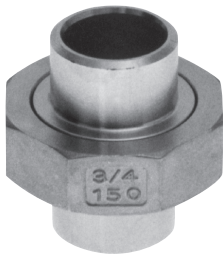


NW	d _i	L	SW
8	1/4"	31	29
10	3/8"	36	34
15	1/2"	38	39
20	3/4"	44	47
25	1"	51	58
32	1 1/4"	55	67
40	1 1/2"	59	76
50	2"	63	90
65	2 1/2"	72	108
80	3"	76	122

Diese Verschraubung wird mit PTFE Dichtung geliefert
Avec joint en PTFE

Typ 703 Verschraubung / Raccord AISI 316

flach dichtend, Schweissanschluss / joint plat, à souder

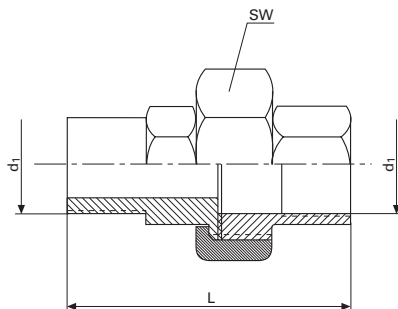
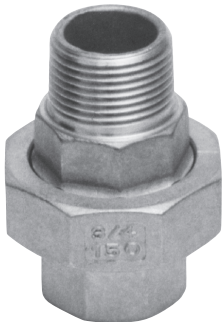


NW	d _a	d _i	L	SW
1/4"	14	9	30	29
3/8"	17	12,5	36	34
1/2"	21,5	16	35	39
3/4"	27	21	41	47
1"	34	27	45	58
1 1/4"	42,5	35	53	67
1 1/2"	48,5	41	55	77
2"	60,5	52	57	90
2 1/2"	76,5	68	62	108
3"	89	80	67	122

Diese Verschraubung wird mit PTFE Dichtung geliefert
Avec joint en PTFE

Typ 705 Verschraubung / Raccord AISI 316

flach dichtend, Innen-/ Aussengewinde / joint plat, taraudé-fileté



NW	d _i	L	SW
8	1/4"	45	29
10	3/8"	53	34
15	1/2"	54	39
20	3/4"	62	47
25	1"	71	58
32	1 1/4"	77	67
40	1 1/2"	85	77
50	2"	92	90
65	2 1/2"	101	108
80	3"	110	122

Diese Verschraubung wird mit PTFE Dichtung geliefert
Avec joint en PTFE